



WE WORK TODAY TO KEEP BEING LEADERS TOMORROW



DESIGN AND CONSTRUCTION OF MODULAR HOSPITALS (SUITABLE FOR COVID-19)

We offer the Complete Hospital to operate autonomously from existing hospitals, since it has been seen that in several hospitals' biosecurity has partially expired and could surely affect the health of health personnel.



COMPLETE MODULAR HOSPITAL H.M.C.

Designed under the recommendations of the World Health Organization (WHO) and high biosafety standards.

The sheds are designed as a system that adapts to the different needs in terms of dimensions, uses, operation, climate, equipment, biosecurity, Land, etc.

It includes:

- 1 Income and Logistics module
- 3 PIP Primary Hospital wards, with 546 beds
- 1 Intermediate Therapy Internment module, with 98 beds
- 1 Intensive Therapy Internment module, with 98 beds

Total Hospital: 742 beds

- 1 Clinical Analysis Laboratory
 - 1 operating room with 2 operating rooms
 - Support Facilities and Logistics
- Possibility of attaching the External Office Pavilion
We adapt these projects to your needs and possibilities

MORE THAN 50 YEARS OF INDUSTRY LEADERSHIP

ALL OUR PRODUCTS ARE GALVANIZED

Porticos of galvanized tube with ridge-pieces, constant section and variables.
Perfect geometry. Articulated support that transfer little load to the foundations.
Fast assembly.

Alem 1051 (B1878KHU) - Bernal - Quilmes, Pcia de Buenos Aires, Argentina

Tel.:/Fax: (54-11) 4252-4043 / 5290 - 2720

halperin@halperin.com.ar / www.halperin.com.ar

PRIMARY HOSPITAL WARD

Basic module called the Primary Hospital Ward (PIP), can be used individually or as part of a CHM Modular Hospital Complex.

The modules can range from simple hospitalization modules for primary patients with minimal conditions to modules suitable for working with isolated and highly complex hospitalization areas.

- Hospitalization Pavilions Intermediate Therapy IT
- Intensive Care Unit ICU

The units are basic for multipurpose, being able to use practically without loss of materials to be used as:

:

- Households
- General reception rooms
- Triage
- Hospital Campaign Module



The modules can contain one bathroom per sector, in order to reduce patient transfers and maintain a more severe degree of isolation.

These baths are provided with the complete installation of sewer drains (pipes, chambers, etc) or with chemical baths, which will not need drains.



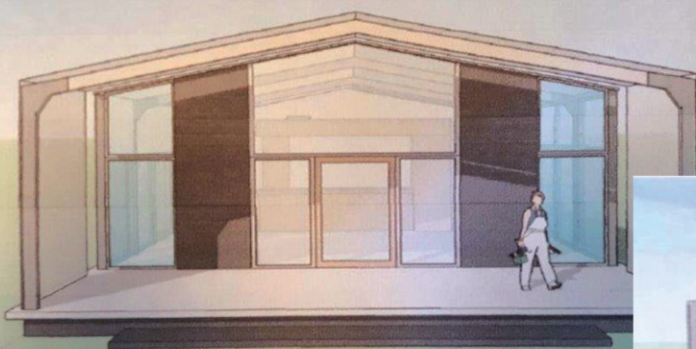
DESIGN AND CONSTRUCTION OF MODULAR HOSPITALS
(SUITABLE FOR COVID-19)

The units are delivered with all their electrical, sanitary, water, drains, lighting fixtures and forced ventilation according to WHO recommendations.

Once the emergency is over, they can be completed with more high technology and remain as lasting extensions of hospitals.

They can be raised and moved to be re-assembled as USP Permanent Sanitary Units, in remote areas and lacking Sanitary Rooms, and can also be used as Multipurpose Rooms, Offices, Dependencies.

GENERAL VIEWS OF THE MULTIPURPOSE UNITS



ALL OUR PRODUCTS ARE GALVANIZED